

CADFEM FlexLM License Server

*needed for floating license



Installation

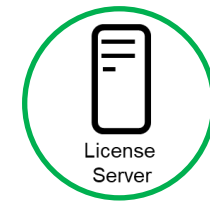


CADFEM[®]

Ansys

CERTIFIED
ELITE CHANNEL
PARTNER

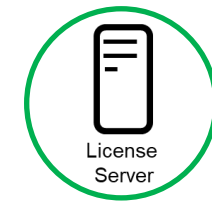
CADFEM FlexLM License Server Supported Operating Systems



CADFEM[®]

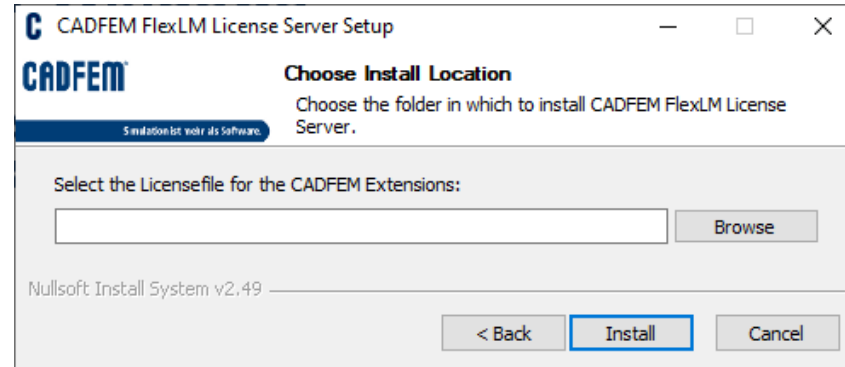
- For Windows operating systems
 - Windows 10 (64 Bit)
 - Windows 8.1 (64 Bit)
 - Windows Server 2019 (64 Bit)
 - Windows Server 2016 (64 Bit)
- For Linux operating systems
 - Redhat Enterprise Linux (64 Bit)
 - Suse Enterprise Linux (64 Bit)
- Currently used version: **FlexNet Licensing v11.19.0** build 284597

CADFEM FlexLM License Server Installation for Windows



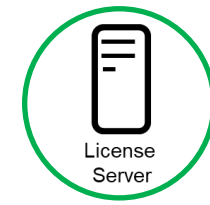
CADFEM®

- Execute the installer of the CADFEM FlexLM license server **CADFEM_FlexLM_LicenseServer_X.X.X_Win64.exe**
- Select the license file (**license.lic**) for the CADFEM Ansys Extension
- The selected license file is then copied to the license server directory



- When the CADFEM FlexLM license server is running the service **CADFEMFlexLMServer** appears in the windows service list

CADFEM FlexLM License Server Configuration of Server Ports



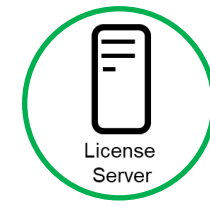
- Configuration of the License Server Ports
 - Within the **license.lic** the server name and the server address of the license server machine are predefined

```
SERVER server_name server_address <PORT NUMBER1>  
VENDOR cadfmlmd port=<PORT NUMBER2>
```

Example: **SERVER myHost 1234567890ab 27100**
VENDOR cadfmlmd port=27101

- Dependent on the server configuration, it might be necessary to change the given port numbers within the license.lic. These ports must be opened in the firewall:
 - <PORT NUMBER 1> is the port number on which the license server (lmgrd) is listening
 - <PORT NUMBER 2> is the port number on which the vendor daemon (cadfmlmd) is listening

CADFEM FlexLM License Server Installation for Linux



- Extract the archive of the CADFEM FlexLM license server
CADFEM_FlexLM_LicenseServer_X.X.X_RedHat.zip
- For the installation of the CADFEM FlexLM license server on Linux the following files have to be copied to the linux directory of the license server
→ **Licensing/licenseserver/linux/64_bit**
`cadflmlmd` `lmdown` `lmutil`
`lmborrow` `lmgrd`
- The floating license file (**license.lic**) for the CADFEM Ansys Extension has to be located in the same linux directory (Licensing/licenseserver/linux/64_bit)
- Remarks for the commands:

Starting the server: **`./lmgrd -c license.lic -l lic_server.log`**
Shutting down the server: **`./lmdown -c license.lic`**